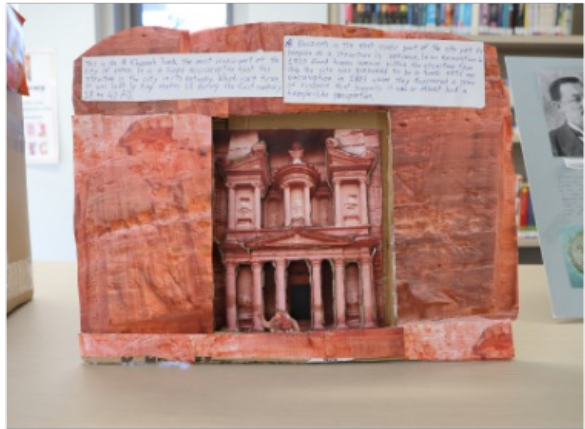
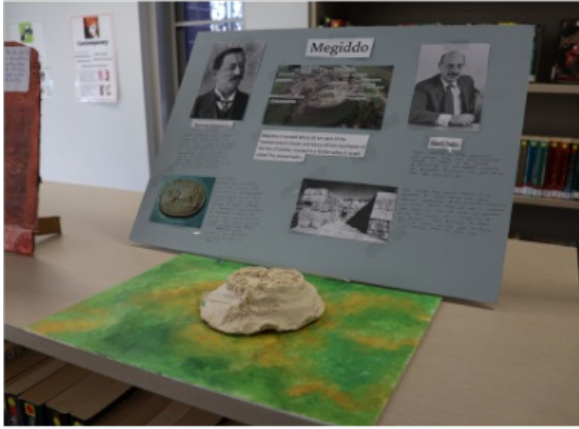
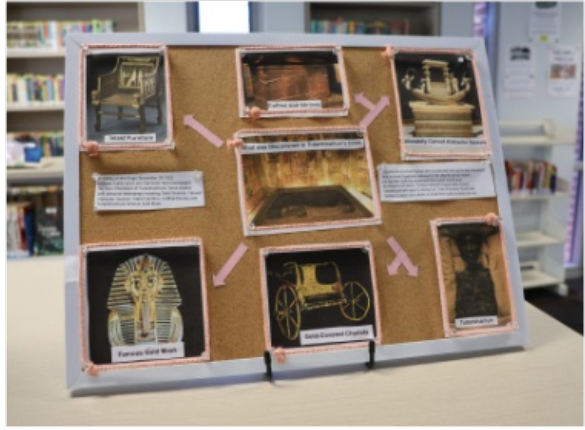


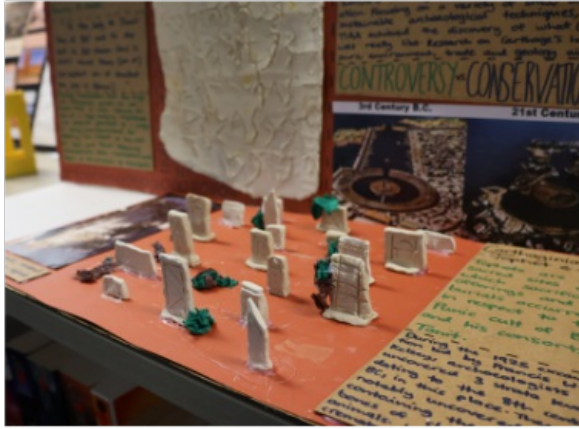


## YEAR 11 ANCIENT HISTORY MUSEUM DISPLAYS

**Year 11 Ancient History students chose an archaeological site to research for their Major Project**, focusing on ways that excavation techniques have changed over time. Each student created a museum display which demonstrated key features of their site and presented their research as a museum guide. Their presentations are outstanding and are now on display in the library.







**Michelle Pearson**

*HSIE Coordinator - History & Legal Studies*