



# THE WAY

TERM 1 | THE WAY  
NEWSLETTER | FRIDAY 22  
MARCH 2024



## CAN YOU SOLVE THIS?

**Since the beginning of term, the Mathematics students have been learning diligently in the classroom.** They have been completing their assigned homework tasks which they have been receiving on a regular basis to practice in preparation for their upcoming assessment tasks.

### Upcoming assessment tasks for Term 1

Year 7 - Week 9

Year 8 - Week 11

Year 9 - Week 10

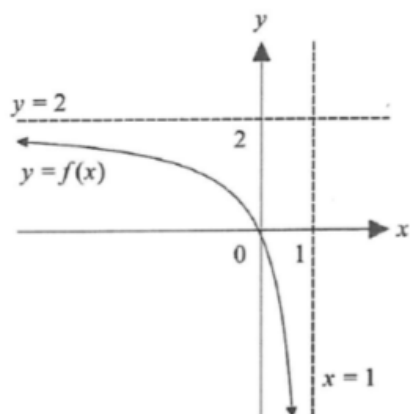
Year 10 - Week 11

Year 11 (Standard, Advanced) - Week 9

Year 12 (Standard, Advanced) - Week 8

Year 12 (Extension 2) - Week 9

The Year 11 Extension 1 class recently looked at how to graph absolute value functions when given the graph of  $y = f(x)$ . This includes graphing  $y = |f(x)|$ ,  $y = f(|x|)$ ,  $|y| = f(x)$  and combinations of those three transformations. Using the graph of  $y = f(x)$  below, can you graph the shape of  $|y| = |f(|x|)|$ ?



**Mr Andrew Lim**

Senior School Teacher - Assistant Coordinator Mathematics

---