



THE WAY

TERM 1 | THE WAY
NEWSLETTER | FRIDAY 22
MARCH 2024



CAN YOU SOLVE THIS?

Since the beginning of term, the Mathematics students have been learning diligently in the classroom. They have been completing their assigned homework tasks which they have been receiving on a regular basis to practice in preparation for their upcoming assessment tasks.

Upcoming assessment tasks for Term 1

Year 7 - Week 9

Year 8 - Week 11

Year 9 - Week 10

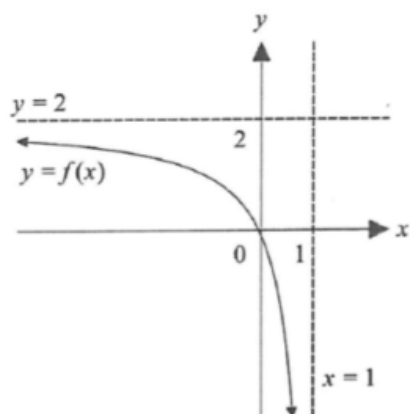
Year 10 - Week 11

Year 11 (Standard, Advanced) - Week 9

Year 12 (Standard, Advanced) - Week 8

Year 12 (Extension 2) - Week 9

The Year 11 Extension 1 class recently looked at how to graph absolute value functions when given the graph of $y = f(x)$. This includes graphing $y = |f(x)|$, $y = f(|x|)$, $|y| = f(x)$ and combinations of those three transformations. Using the graph of $y = f(x)$ below, can you graph the shape of $|y| = |f(|x|)|$?



Mr Andrew Lim

Senior School Teacher - Assistant Coordinator Mathematics
